

∴ **HEINE DELTA® 20 T Dermatoscope**

Precision optics combined with the ability to toggle between polarised and non-polarised illumination



**LED HQ**

LED NOW IN HEINE QUALITY.



## Highest Quality Images and Diagnostic Flexibility

The **DELTA20 T** offers unrivalled precision optics and the functionality to toggle between polarised and non-polarised illumination. No time consuming exchange of contact plates is necessary, at the same time contact dermatoscopy with immersion liquids is possible at any point, allowing the examination method to be matched with the respective pigmented skin lesion to obtain the best diagnosis.



'Quality' has become one of most overused and misused terms today in an effort to sell products. Few companies, however, are able to tangibly define their products quality in terms of end-user benefits and value. At HEINE we clearly define the benefits of HEINE Quality in terms of Performance, Function and Durability:



## PERFORMANCE

**Precision HEINE Optics.** High quality, achromatic optical system provides unmatched sharpness and resolution. Focusing system provides for 10x to 16x magnification for recognition of even the smallest details and structures.

**LED in HQ.** The new standard in LED illumination defining optimal light intensity, homogeneity and colour rendering for each individual examination situation – Colour temperature: 5.000K, Colour Rendering Index (CRI) >80 on a scale of 100. This ensures true tissue colour for the most accurate diagnosis.



LED NOW IN HEINE QUALITY.



## FUNCTION

**Toggle between polarised and non-polarised illumination modes.** Conveniently alternate between polarised and non-polarised views with the press of a button – no exchange of contact plates necessary. Allows recognition of the "Blink Sign" when observing crystalline structures and presence of milia cysts, increasing diagnostic function.

**Optional small contact plate available.** Special small contact plate for difficult to access lesions.

**Digital documentation capabilities.** Connect to major brand SLR digital cameras with HEINE digital camera lens system. Specially designed lenses integrate the camera and DELTA20 T optics together to provide the highest quality imaging possible.

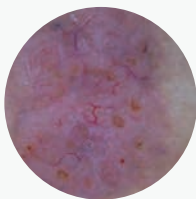


## DURABILITY

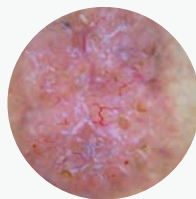
**5 Year Guarantee.** HEINE makes no compromises in manufacturing high quality medical instruments. Our commitment to vertical integration in manufacturing means we control all aspects of our instrument quality.

**LED Thermal Management.** LED illumination systems require thermal management to ensure long-term performance and product stability. Carefully selected and applied heat-diffusing materials in the DELTA20 T guarantee consistent quality and performance throughout the LED's lifetime rating of up to 50.000 hours.

"Blink Sign" observable in a basal cell carcinoma



Basal cell carcinoma  
non-polarised illumination



Basal cell carcinoma  
polarised illumination



## ORDERING INFORMATION

### DELTA20 T Set with BETAL/NT300

The set includes the DELTA20 T Dermatoscope Head, contact plate with scale, BETA L Li-ion Rechargeable Handle, dermatoscopy oil 10ml, hard case and NT 300 charger

K-262.29.420



### DELTA20 T Set with BETAR

The set includes the DELTA20 T Dermatoscope Head, contact plate with scale, BETA R NiMH Rechargeable Handle for main socket, dermatoscopy oil 10ml, hard case

K-262.20.376



### DELTA20 T Set with BETA

The set includes the DELTA20 T Dermatoscope Head, contact plate with scale, BETA Battery Handle, dermatoscopy oil 10ml, hard case

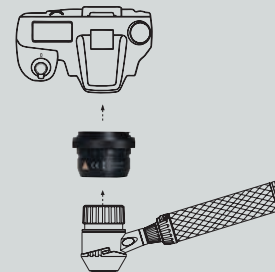
K-262.10.118



### SLR Photo adaptor

for Dermatoscope/digital SLR camera, with optics.  
Wide field of view, crisp image.

for Canon	K-000.34.185
for Nikon	K-000.34.186
for Olympus	K-000.34.187



For further information and configuration options please refer to: [www.heine.com](http://www.heine.com)

We reserve the right to change specification without notice.  
© 2015 HEINE Optotechnik GmbH & Co. KG. All rights reserved.

Your distributor

04/15. A-000.00.212 e